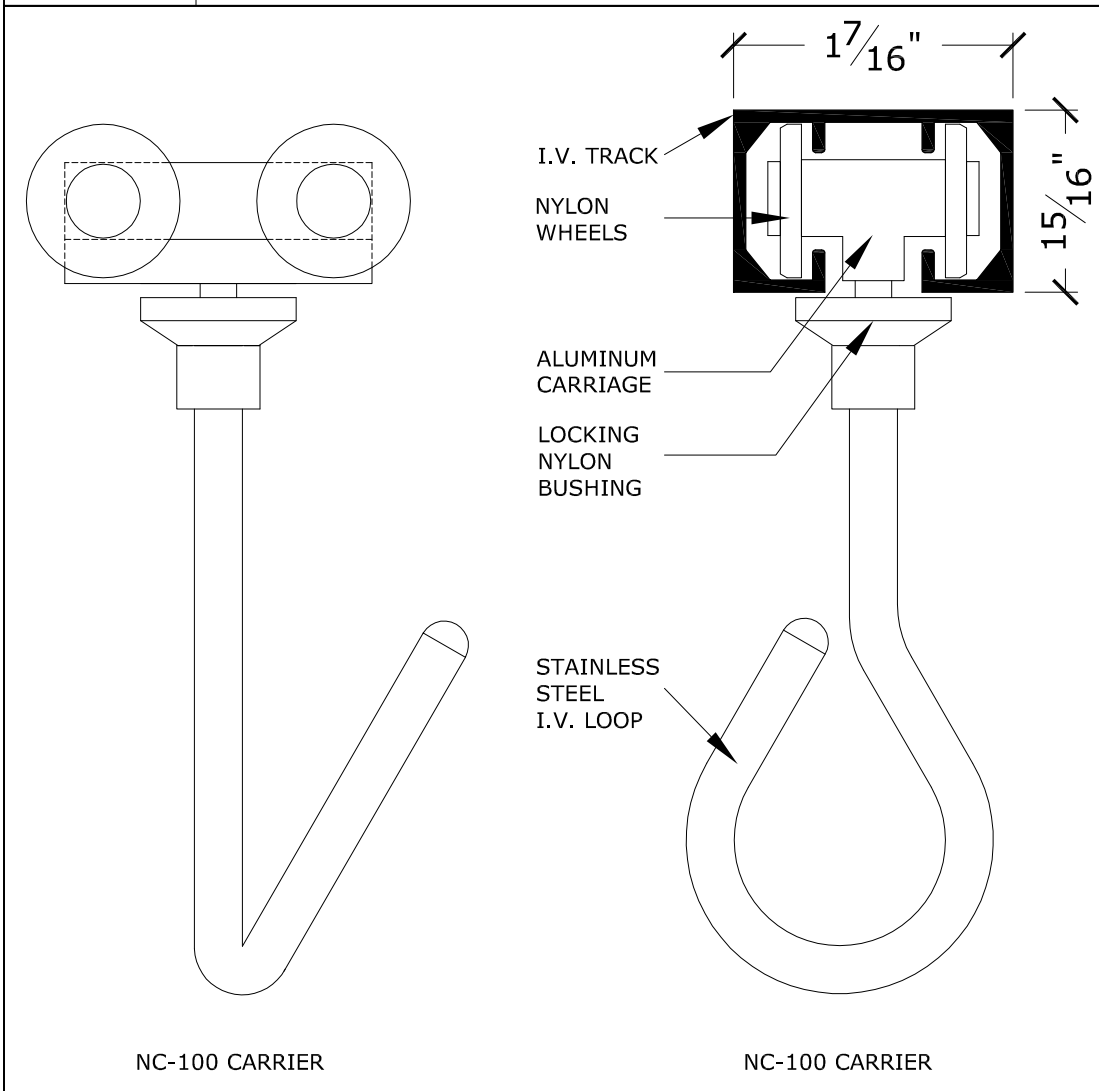


# Surface Mounted I.V. Track & I.V. Carrier

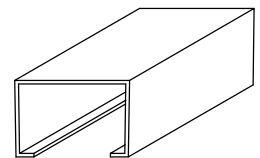


MATERIAL	#6063 Extruded Aluminum
FINISH	Satin Anodized or White Powder Coat
BENDS	All bends shall be 12" radius and up to 90 degrees
IV CARRIERS	NC-100-Aluminum carriage, 4 nylon wheels, stainless steel IV loop, locking nylon bushing. Locks into place with a single 180 degree twist. per track                      total

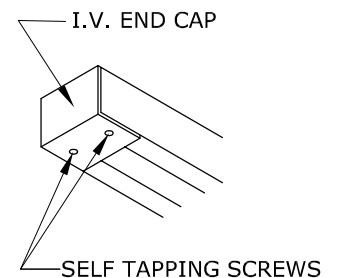


**1100IV  
w/  
NC-100**

1108 Connector (C)



1107 End Cap (EC)



ARCHITECT		DATE	
CONTRACTOR		DATE REV	
DISTRIBUTOR		DRAWN BY	
PROJECT		JOB #	
		SHEET	